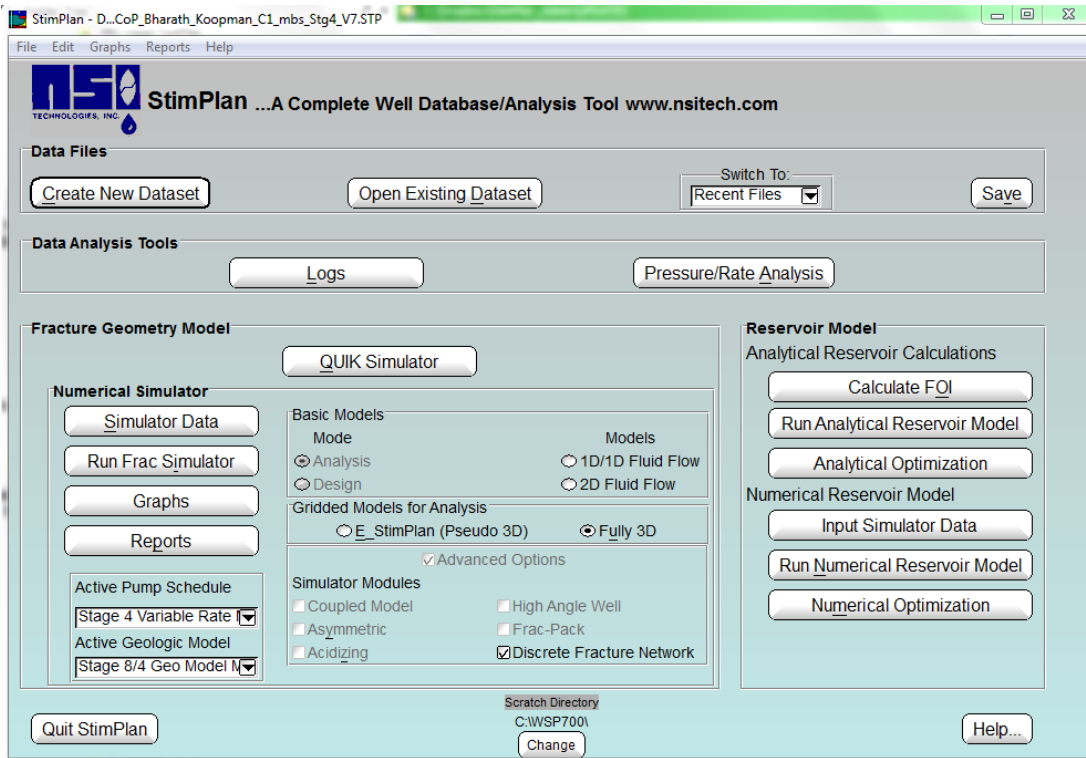
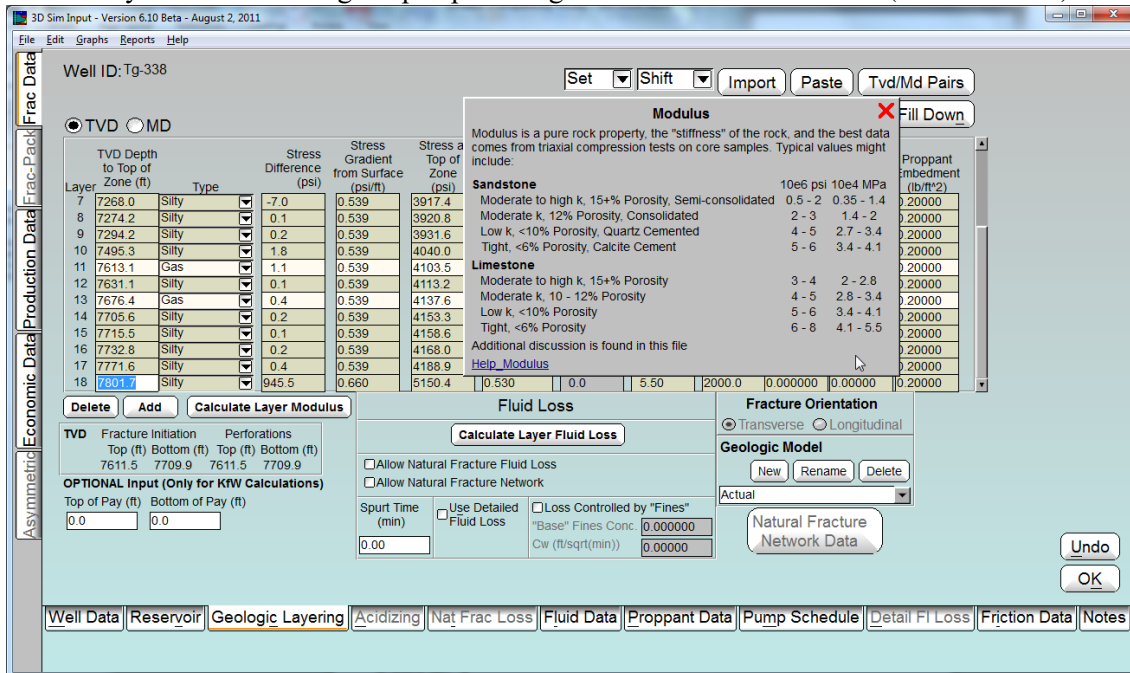


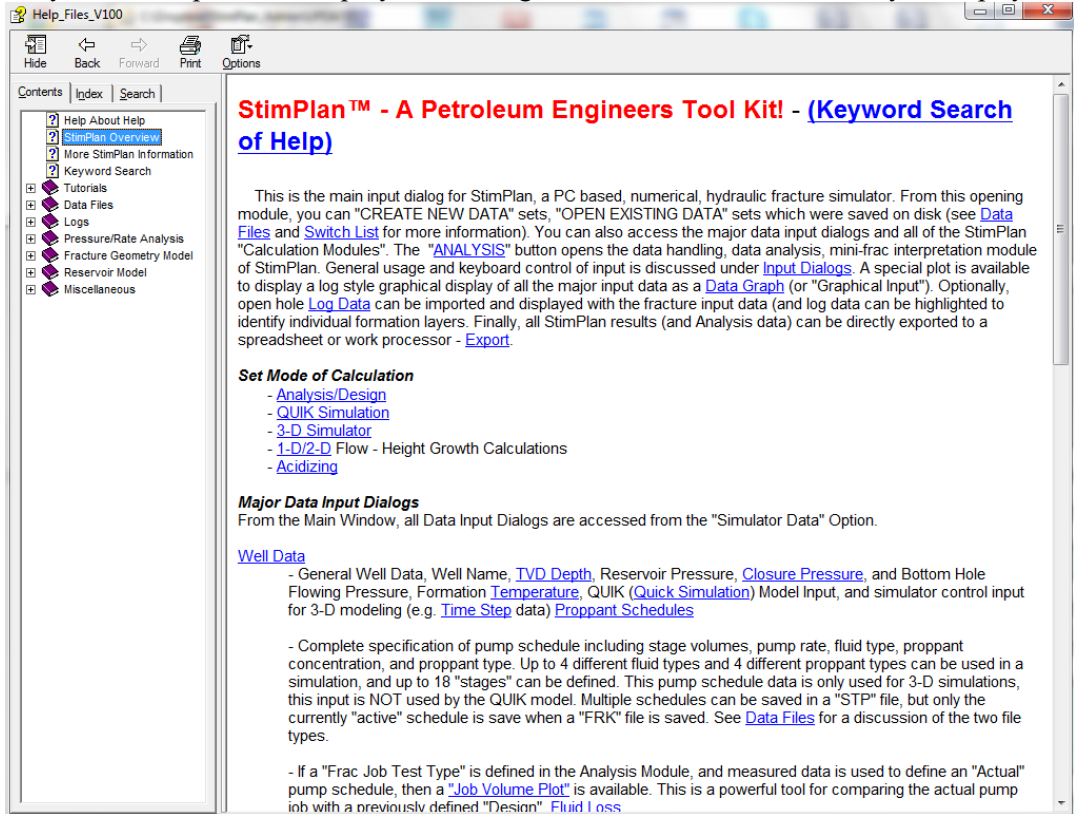
# StimPlan Version 7.00



- **Help System** – Greatly expanded use of “Help Pop-Ups” for individual subjects. These are also being expanded to include “Hydraulic Fracturing Help/Tips” along with software information (as seen below).



This part of a totally revised/expanded “Help System” using a more standard “Windows style” help system (as

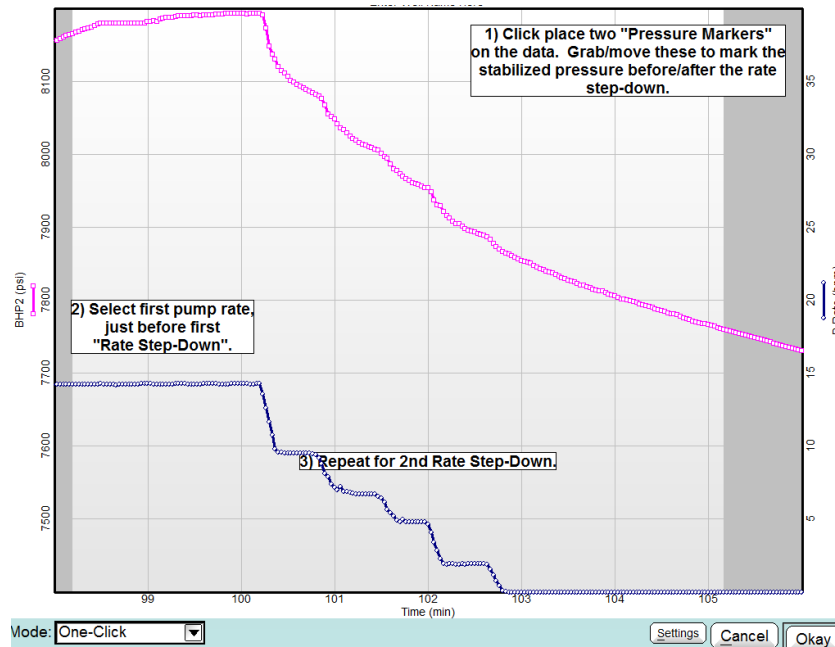


seen below).

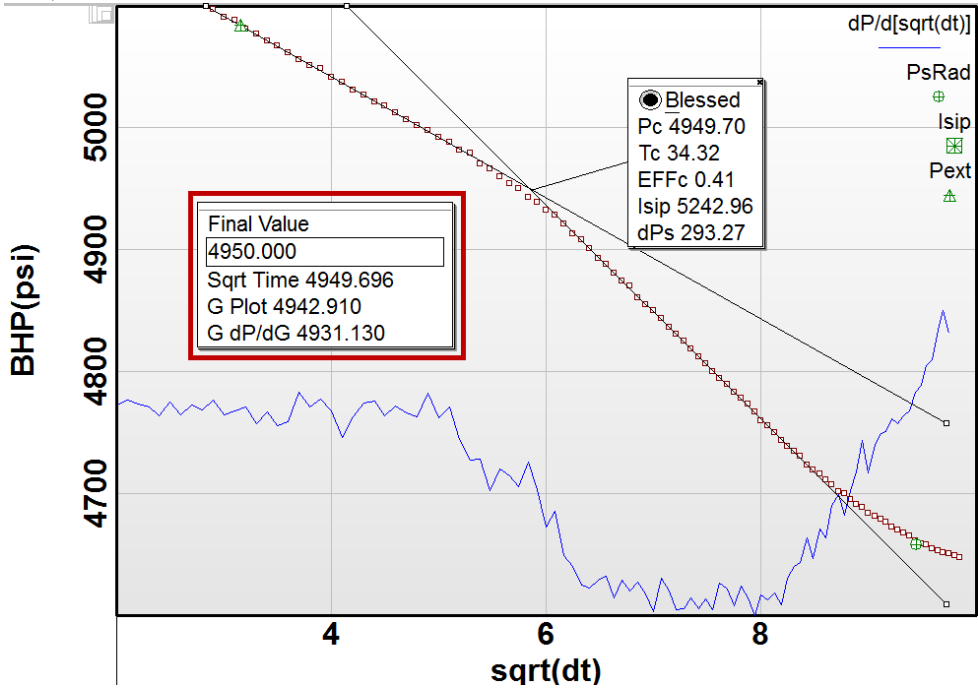
- **Database Files – Further** expanded fluid and proppant database files. Added new “Pipe Friction” data base files.

## Analysis/Logs Modules

- **Analysis Plot Tips** – Added “usage tips” to many Analysis Plots as seen below for Step-Down Test. Further expanded fluid and proppant database files. Added new “Pipe Friction” data base files. As soon as analysis begins, the “tips” disappear.



- **Decline Test Summary Table** – In the decline test analysis, a “Summary Results Table” has been added to the  $\sqrt{\text{Time}}$ , ‘G’, and “G\*dP/dG” Plots as seen below.



The “Final Value” is a User Input, and this is the value carried forward to further analysis.

## E-StimPlan

- **64-bit** – The major change for E-StimPlan & E-StimPlan 3D is the move to 64-bit, multi-core parallel processing. This greatly improves execution speed for multi-core processors, or for multi-chip work stations. In some instances, execution is speeded up by a factor of 3X or 4X.
- **Run-Time Dialog** – Enhanced “run-time” dialog for setting/controlling solution grid for E-StimPlan & E-StimPlan 3D simulations.

